

CONVERSOR 10/100/1000 BASE T- 1000BASE X 550M, MULTIMODO, ref: CCNAMMG550MDU



High flexibility with hot plug-and-play SFP.

1600byte super data packet transmission.

Full duplex-flow control, Half duplex-back.

Full- positioned LEDs to indicate power and network status.

Description.

The non-managed fiber media converter is designed with a switch controller and buffer memory that connects two types segments operation smoothly. The converter can be used as standalone type or as card type to the 2U 19" converter rack-mount chassis for centralized power management.

Features

1. Built-in efficient exchange kernel, Broadcasting filtration function, flow control, CRC error check.
2. Supports SPANNING TREE to conduct fault-tolerant network.
3. Supports 10/100/1000Mbps full/half duplex self-adaptive transmission and auto-negotiations ,easy upgrades.
4. Standalone type can be installed into 14slot 2U Rack; Card type into 16slot Rack.
5. Cache capacity: 1M Bits.
6. Built-in MAC address buffer space : 1K.

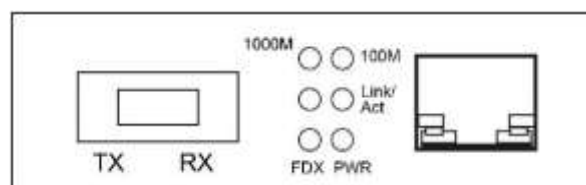
7. Data Rate: 10/100/1000Mbps
8. Fiber Optic: 550 M for Multi-Mode.
9. Optic Conector:SC.

Standards Protocol

- IEEE802.3 Ethernet Standard
- IEEE802.3u Fast Ethernet Standard
- IEEE802.3z 1000BASE- SX/LX(Gigabit-Ethernet)
- IEEE802.1p QoS, IEEE802.1d Spanning Tree

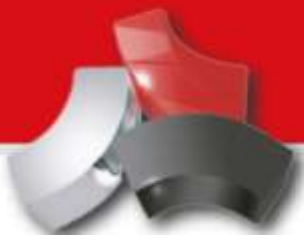
Panel Structure Chart

10/100/1000Mbps Media Converter



LED Status Instruction

LED	FUNCTION	STATUS	OPERATION
PWR	POWER	ON	Power on
		OFF	Power off
FX	Optical Signal	ON	Connected
		OFF	Not link
TX	Ethernet	ON	Connected
FDX	Ethernet	ON	Full duplex
		OFF	Half duplex
100	Ethernet	ON	100Mbps signal
		OFF	10Mbps signal
Link/ Act	Fiber/ Ethernet	ON	Connected
		FLASH	Data flow
		OFF	Not link
1000M	Ethernet	ON	1000Mbps signal



Applicable optical cable

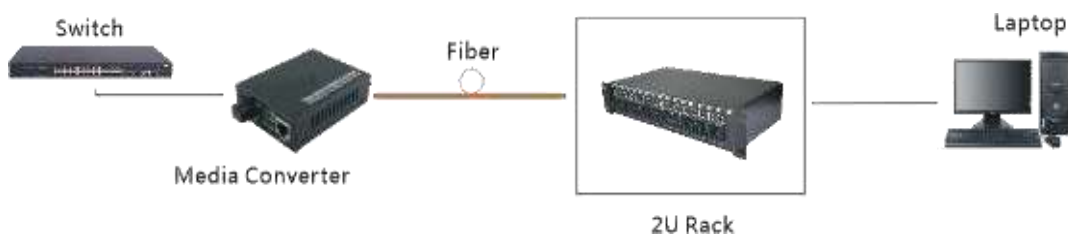
- * Single optical cable: 8.3/125um,8.7/125um,9/125um,10/125um.
- * UTP Cable: Cat5/5e,Cat6

Technical Parameter

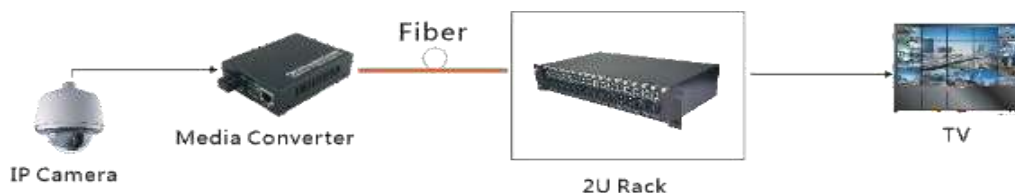
Items	10/100M Media Converter	10/100/1000M Media Converter
Transmission Type	Fast Ethernet	Gigabit Ethernet
Transmission Mode	10/100M Full/half duplex	10/100/1000M Full/half duplex
MTBF	>3 years	> 3 years
BER	<1E-8	<1E-8
Data Buffer	1MBits	1MBits
Power Stability Factor	0.2mw/°C	0.2mw/°C
Input Power Range(dBm)	0~-30	0~-40
Operation Temperature	0°C~70°C	0°C~70°C
Storage Temperature	-45°C~80°C	-45°C~80°C
Maximum Current	800mA	800mA
Power	2.5w	2.5w
EMC	Accord with FCC Part15	Accord with FCC Part15
Volume	External: L×W×H 95×70×26mm	
	Internal: L×W×H 140×110×30mm	

Installation and Connection

- * When connecting with PC, twisted-pair are parallel lines.
- * When connecting switchconcentrator, twisted-pair are cross-wire.
- * Connecting with IP Network



- * Connecting with IP camera



Caution

- The connection of optical interface must match single mode/multimode for Tx and Rx.
- Dual fiber, Tx and Rx must be same wavelength; Single fiber, Tx and Rx as corresponding crossed wavelength.

Packing List

Please check the following items from package before Installing the converter 1* Fiber

Media Converter

1* Power Adapter 1* User Manual